

artsbridge
foundation presents...



ARTRAGEOUS

THE INTERACTIVE ART & MUSIC EXPERIENCE

2024-2025

FIELD TRIP
EDUCATOR
GUIDE

Dear Educators,

Welcome to ArtsBridge’s 2024-2025 Field Trip Season!

We are thrilled to present **Artrageous** to you and your students.

Thank you for sharing this special experience with your students. We hope this field trip guide helps you connect the performance to your in-classroom curriculum in ways that you find valuable. In the following pages, you will see guidelines regarding your field trip, contextual information about the performance and related subjects, as well as a variety of pre- and post-discussion questions and assessment activities. On page 18, you’ll find the Curriculum Connections included in Artrageous. Please “pick and choose” materials and ideas from the guide to meet the unique needs of your class.

We look forward to inspiring and educating your students through the arts on Monday, November 18, 2024 at the world-class Cobb Energy Performing Arts Centre!

See you at the theatre,

**The
ArtsBridge
Team**

Guide Contents

| | |
|--|-------|
| About Cobb Energy Performing Arts Centre | 3 |
| Field Trip Guidelines | 4 |
| Transportation Information | 5 |
| Directional Map | 6 |
| Local Dining | 7 |
| Theatre Etiquette | 8 |
| About the Troupe | 9 |
| Pre-Show Activities | 10-11 |
| Theatrical Vocabulary | 12 |
| What is Artrageous? | 13 |
| Vocabulary Words | 14 |
| Post-Show Activities | 15-17 |
| Curriculum Connections | 18 |
| Resources | 18 |

About Cobb Energy Performing Arts Centre

The landmark Cobb Energy Performing Arts Centre is a cultural, entertainment and special events venue of a national significance. Atlanta's first major performing arts facility in four decades, Cobb Energy Centre boasts state-of-the-art systems, amenities and design features that allow the expression of any artistic idea and captivate performers, patrons and event planners. The Centre's strong suit is versatility. It can accommodate events as diverse as Broadway, concerts, corporate functions, private parties and family entertainment.

The Centre's distinctive façade and three-story lobby – highlighted by a 65-foot, floor-to-ceiling glass curtain wall – offer visitors a grand welcome and stunning introduction to a venue of great warmth, elegance and possibilities. Nothing speaks "special occasion" like the majestic lobby – a gathering space and promenade with two grand staircases, specially designed, colored-glass chandeliers and walls of Venetian plaster.

The Centre's 2,750-seat John A. Williams Theatre captures the richness and intimacy of vintage theatres. Yet, it incorporates modern touches and technology – including advanced sound, lighting and acoustical elements – that allow fine-tuning for each performance. With equal poise, the Theatre can host concerts, opera, drama, comedy, lectures, dance and spoken word.

The Cobb Energy Centre is a premier location for black-tie balls, galas, wedding receptions, corporate meetings, banquets, bar and bat mitzvahs, and parties.

- 10,000-square-foot ballroom, divisible into 3 sections, holds up to 630 for a seated meal, 800 in theatre setting and up to 650 for a reception
- 2,750-seat theater ideal for graduations or general sessions
- Unique special event spaces on theater stage, 3-level lobby, and outdoor terrace.

The Centre is equipped to ensure ArtsBridge's vision of making sure everyone has access to arts experiences. Designated seats in various locations are available at every event for guests with disabilities and those needing special assistance. The venue is equipped with wheelchair accessible restrooms, elevators, plaza ramps, wheelchair accessible ticket windows, phonic ear devices, wheelchair accessible drinking fountains, and handicapped parking. Visit www.cobbenergycentre.com to learn more about accessibility, including the new WaveCast app that is available to download to mobile devices and sign-language interpreted performance.

For safety purposes, ArtsBridge follows the **Safety-First Guidelines of the Centre.**

DID YOU KNOW?

- More than 250,000 patrons visit the Cobb Energy Centre each year.
- The Cobb Energy Centre opened in 2007.
- The Cobb Energy Centre has two main spaces:
 - John A. Williams Theatre, 2,750 seats
 - Kessel D. Stelling Ballroom, 10,000 square feet
- No seat is more than 160 feet from center stage in the John A. Williams Theatre.
- There are 1,000 parking spaces on site.
- The Centre is located one mile from the new Braves stadium and only 15 minutes from downtown Atlanta.
- ArtsBridge programs began in 2007 and reach 30,000 students each year.



Field Trip Guidelines

Below are simple guidelines for ArtsBridge Field Trips to Cobb Energy Performing Arts Centre. Please read carefully and contact us at (770) 916-2805 if you have questions.



Reservations: All field trip admissions are to be made in advance. Please do not bring more than the number of seats reserved. Performances are expected to sell out and we will not be able to accommodate an increase in numbers at the last minute. All patrons, including teachers and chaperones, must have a reservation in order to attend these performances. Children under the age of three are not permitted to attend.



Payment: Payments must be made in full, 4 weeks prior to the day of show, or we will not be able to accommodate your reservation. An invoice will be given to you at the time your reservation is made. Once you have paid in full, we will send a confirmation, which will serve as your school's ticket into the performance. ArtsBridge reserves the right to cancel unpaid reservations after the payment due date.



Transportation: The Centre can accommodate school buses, vans and cars. Please be aware that vans and cars will incur a reduced vehicle parking fee. A third party contractor runs the Centre's garage and charges this fee. There is no charge for parking school buses. All buses, vans and cars must comply with directions provided by on-site staff.



Arrival: All vehicles should approach the Cobb Energy Performing Arts Centre from AKERS MILL ROAD (map enclosed). Upon entering the driveway, buses will be directed to the circular drive where they will temporarily pull up to the curb for unloading. A Cobb Energy Performing Arts Centre representative will board the bus and check-in your school. Students will be immediately unloaded and buses will be directed to their designated parking areas.



Seating: Students are seated as they arrive, starting with the floor level, first row. The exception to this is for programs with older and younger students in attendance at the same time. In this case, students in kindergarten and first-grade will be seated in the first few rows of the theatre. There are three levels of seating, with the back row of the top level no more than 160 feet from the stage.



Restrooms: Please seat your entire group, before taking restroom breaks, so that you can be easily found. Students MUST be accompanied by adult chaperones when going to the restroom. We encourage that you take groups so there are fewer trips.



Chaperones: Chaperones have a job to perform while at the Centre. Please make sure that your chaperones are interspersed among students, and that they are prepared for the day's responsibilities. Please discuss restroom visits, emergencies, behavior, etc. with your chaperones prior to arrival.



Behavior: Students and teachers are encouraged to enjoy performances, applaud and express enthusiasm in a manner that is appropriate for the performance, yet not disruptive for others. We request that all phones, tablets and any other electronic devices be completely turned off or on silent mode during the performance. We ask that chaperones on upper levels watch for students tossing or throwing items to lower levels and prevent students from climbing or leaning on railings. No student can leave the audience chamber without an accompanying chaperone. Students/classes that are disruptive may be asked to leave the performance with no refund. (See *Theatre Etiquette* on Page 8)



Departure: Performances last approximately one hour. Upon conclusion of the performance, classes will be dismissed to the designated parking area to board their buses and return to school.



Lunch: There is no facility for students to eat lunch in the Cobb Energy Centre. We recommend students eat lunch at the Galleria Specialty Mall, Cumberland Mall, at a park on the route to/from the venue or on their bus. Check Page 7 for some of ArtsBridge's favorite restaurants to eat at around the theatre! Snack Packs will be provided for students, teachers and chaperones attending a field trip. For more information, visit www.ArtsBridgeGA.org/snack-pack-program.

Transportation Information



Buses: All school buses must approach the building from AKERS MILL ROAD on the North side of the building. This will be crucial in assuring a fairly smooth flow of traffic. There will be Centre representatives guiding you. Buses will pull onto the site from behind the building and then drive to the front. PLEASE MAKE SURE YOUR DRIVERS USE THE MAP BELOW. There is no charge to park school buses on-site.



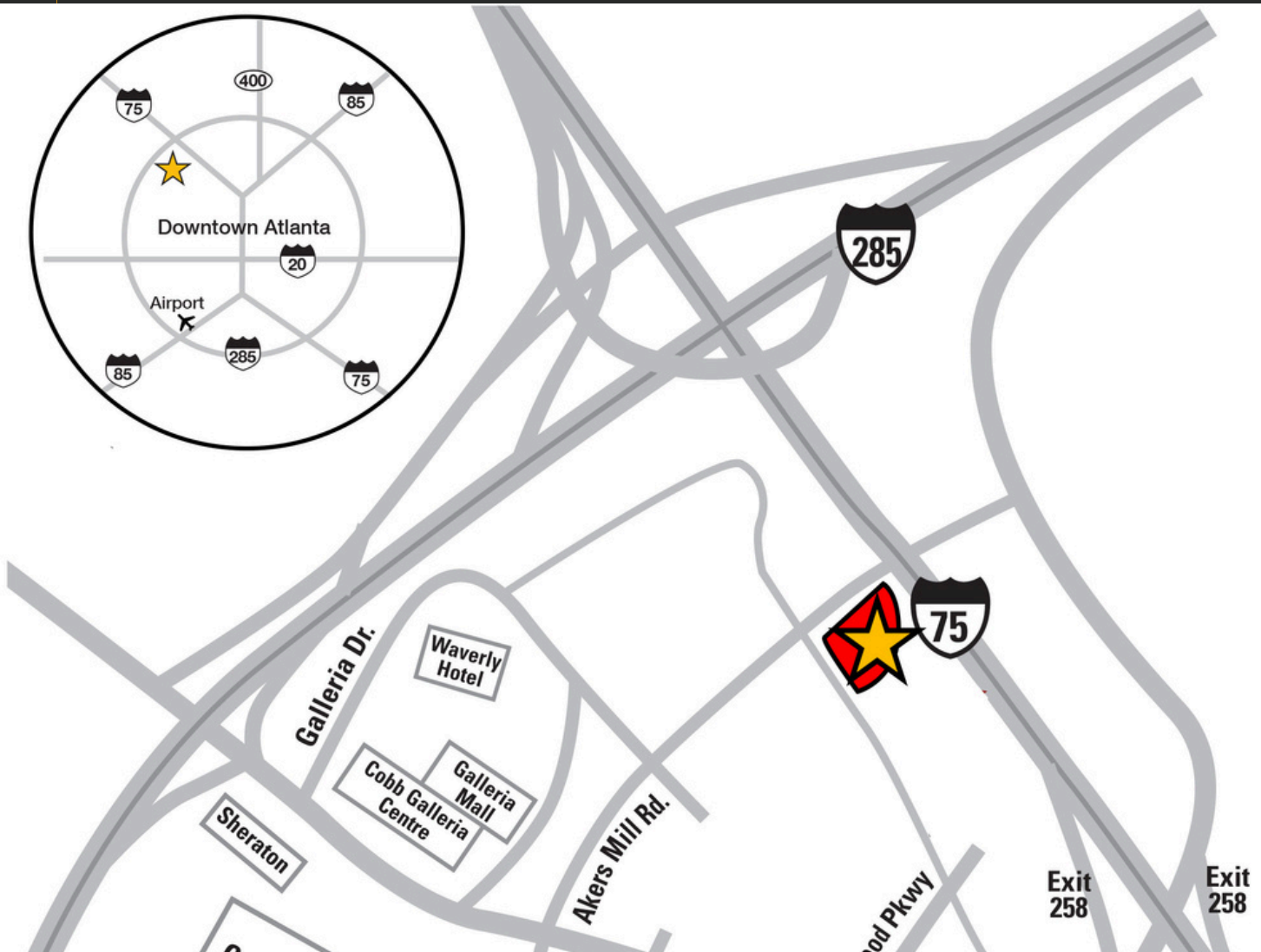
Checking In: When you arrive at the front of the building, a representative from the Centre will board your bus to check-in your school. You and your bus driver will be given a large number that will be taped to the bus windows. Please remember your number, as it will help you find your bus after the performance.



After the Show: After the performance, buses will be parked in the Centre's surface lot in numerical order and representatives will assist you in locating your bus(es). We encourage everyone to board their buses as quickly and safely as possible. For safety reasons, we hold all buses until everyone has boarded, so please make your way directly to the surface parking lot following the performance (see map below).



Cars/Vans/SUVs: You will approach the building in the same manner, but will park in our parking deck. Please note there is a reduced *per-vehicle* parking fee for cars/ vans/SUVs. After you have parked, make your way to level 2 of the deck and to the west side (theatre side) of the building. When you emerge from the parking deck, there will be a Centre representative to check you in and direct you to your seats.



Additional Map for All Vehicles Attending



- ★ ENTRANCE
- ➔ ARRIVAL
- ➔ DEPARTURE

Local Dining

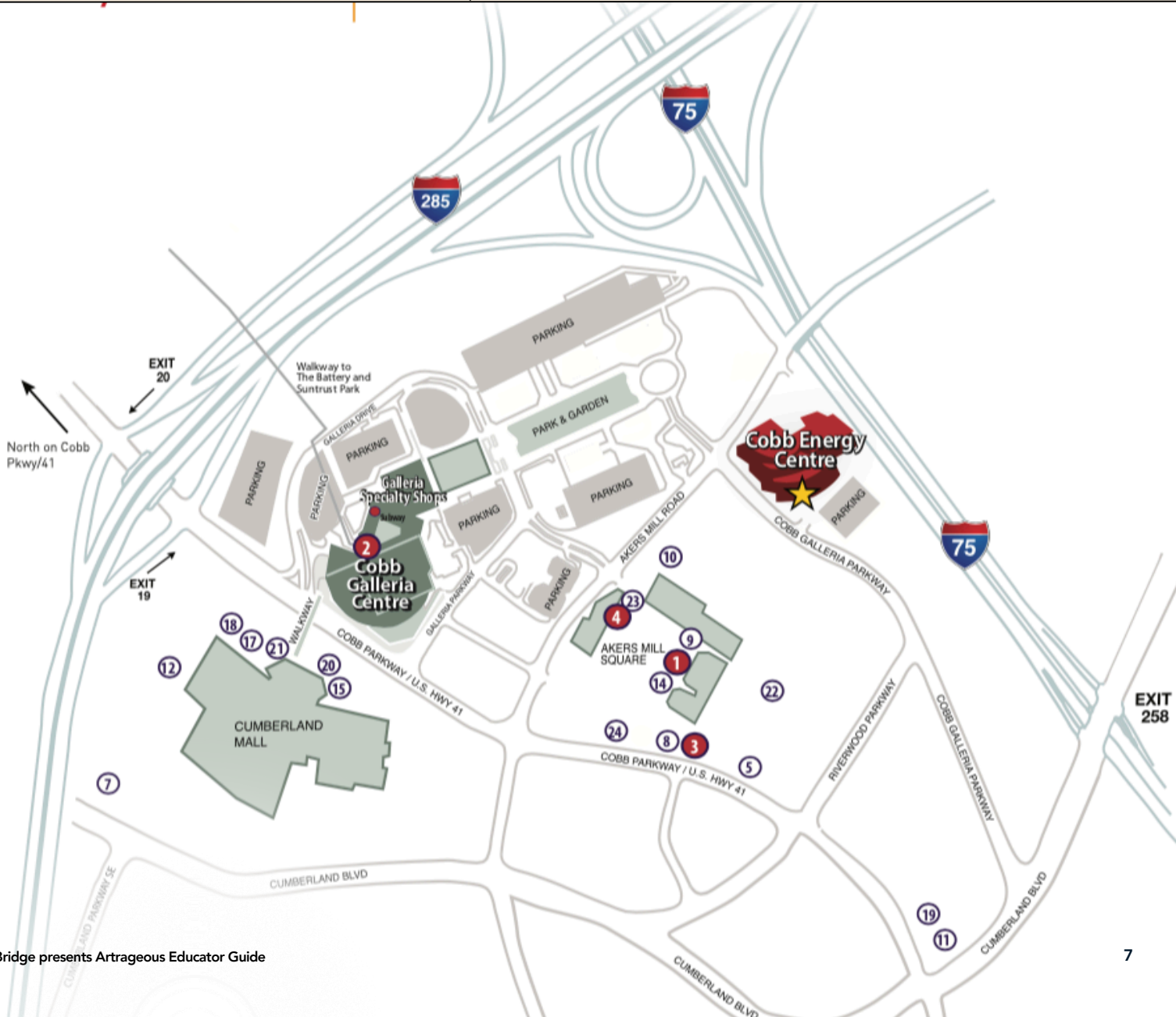
Food Sponsors

ArtsBridge Program Food Sponsors within driving distance of Cobb Energy Performing Arts Centre:

1. Hopdoddy Burger Bar
2. Murph's
3. Chick-fil-A
4. Subway

Other Nearby Restaurants

5. Bonefish Grill
6. C&S Seafood and Oyster Bar
7. Carrabba's
8. Chipotle Mexican Grill
9. Korean BBQ & Hot Pot
10. Cinco's Mexican Cantina
11. Copeland's of New Orleans
12. Fresh To Order
13. Kuroshio Sushi Bar & Grill
14. Longhorn Steakhouse
15. Maggiano's Little Italy
16. Olive Garden
17. P.F.Chang's
18. Stoney River Legendary Steaks
19. TacoMac
20. Ted's Montana Grill
21. The Cheesecake Factory
22. Top Spice
23. Blaze Pizza
24. CAVA





Theatre Etiquette

A live performance is a unique experience shared between performers and audience members. Unlike television or movies, audience distractions can disrupt the performers, production and audience. Before you arrive at the Cobb Energy Centre, please review the following information with your students and chaperones, and help ArtsBridge create a meaningful experience for all.

- Arrive early. Groups are seated on a first-come, first-served basis. Seats are not assigned for ArtsBridge events.
- Food, drink, candy, gum, etc. is not permitted in the theatre.
- Silence or turn off all electronic devices. We encourage you to share your ArtsBridge experience at the Cobb Energy Performing Arts Centre via social media, but please refrain from doing so or texting during performances; the glow from your device is distracting.
- Photography and video/audio recording of any kind is not allowed in the theatre during the performance.
- Respect the theatre. Remember to keep your feet off of the seats and avoid bouncing up and down.
- When the house lights dim, the performance is about to begin. Please stop talking at this time.
- Talk before and after the performance only. Remember, the theatre is designed to amplify sound, so the other audience members and the performers on stage can hear your voice!
- Use the restroom before the performance or wait until the end.
- Appropriate responses such as laughing and applauding are appreciated. Pay attention to the artists on stage – they will let you know what is appropriate.
- If you need assistance during the show, please find your nearest volunteer usher.
- As you enter and exit the theatre, remember to walk and stay with your group.
- Open your eyes, ears, mind and heart to the entire experience. Enjoy yourself!



ABOUT THE TROUPE



A long time ago (1980's) in a land far away (Vancouver, Canada) a troupe of misfits decided they wanted to see the world. Together they started the "All and Everything Theater", a non-profit Children's Theater focusing on Children's Entertainment, Street Theater and Life-sized Bunraku Puppetry.



In the late 80's on Christmas Day, their theater building (which they built from the ground up), with all their props and puppets, burnt to the ground. Instead of packing it in, they created a new act called The Pink Flamingos (the flame colored bird, standing solidly on one leg and rising from the ashes): this music based troupe has performed for the likes of Sir Richard Branson, Steve Forbes, General Colin Powell... and in venues and events all over the world from India to Thailand, Paris to Austria performing at over 2000+ events in their History.

As people who live and breathe the Arts, Creativity, Community, and Inspiration, they have decided to go back to their roots and share their passion with the world as *Artrageous*.

Art, Music, Theater, Singing, Dancing, Audience Interaction. All on one stage. All done as a team of friends seeing the world and sharing a love of the Arts.

Imagine witnessing the creativity of an artist creating a masterpiece before your eyes in mere moments. Combined

with captivating vocals, intricate choreography and exciting music, *Artrageous* takes you on a visual journey and a high energy ride of inspiration, creativity, and engagement.

Our troupe of artists, musicians, singers and dancers pay tribute to a variety of art forms, icons and musical genres throughout the show. The result – a uniquely entertaining, masterpiece show culminating in a gallery of fabulous finished paintings. A signature of the *Artrageous* Troupe, from the very beginning of their long history, is interaction and engagement... so be prepared to be a part of the show. Each show is as unique as each audience and we can't do it without you!

PRE-SHOW ACTIVITIES

MANY KINDS OF ART

There are so many different ways to express yourself and anyone of those ways could be called art. Feel free to explore your unique talents and see what you can create!

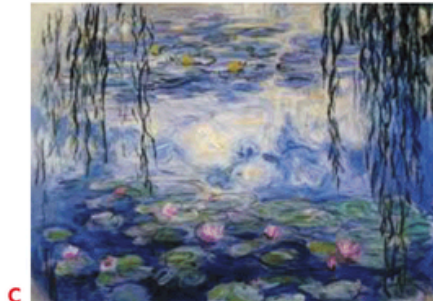
What are some forms of art that you know? Painting, Prints, Drawings, Photography, Performing Arts, Craft, Design, Mixed Media, Sculpture, Installation, New Media

Look at the following pieces of art and answer the following questions for each piece:

1. How does the piece make you feel?
2. Is there a piece of music that would describe the painting?
3. How would you move if you were in the painting?
4. What do you think the artist was thinking when they painted this piece?



a Andy Warhol, *Marilyn Diptych*, 1962



c Claude Monet, *Water Lilies*, 1916



f Pablo Picasso, *The Weeping Woman*, 1932



b Grant Wood, *American Gothic*, 1930



d Salvador Dali, *The Persistence of Memory*, 1931



e *Starry Night* by Vincent Van Gogh, 1889



g Frida Kahlo, *Self-Portrait with Thorn Necklace and Hummingbird*, 1940

Pre-Show Activities

Before attending an ArtsBridge Field Trip, review the following questions and vocabulary with your students:

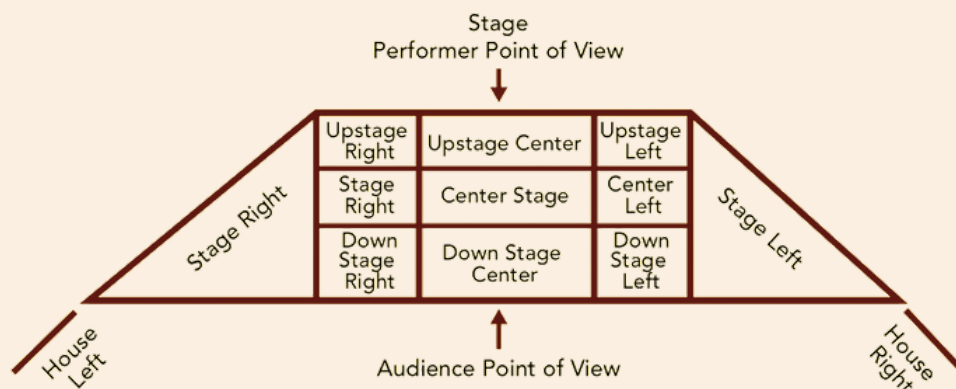
1. How many of you have experienced a live theatre performance? What did you see?

2. What are some of the differences between going to the theatre and watching television or going to a movie?

3. The BAD Audience Member! A fun way to review theatre etiquette with your students is to have them point out bad audience behavior during a show. Here's one way to illustrate this concept:

- Have students present something to the class. The key is they are "actors" and the class is the audience.
- Once they are into the activity, you (the teacher) leave the room and then re-enter. Enter loudly, chew gum, step on people's feet, talk to them, etc. Be the worst audience member. Find a seat and continue to talk to others, ask what's going on in the performance, take pictures, talk on your cell phone etc.
- Ask the class to list all the bad behavior. Write these on the board.
- Ask the audience members how they felt when the bad audience member came into the theatre. Could they hear the actors? Were they distracted?
- Ask the actors how they felt. Could they concentrate on their performance?

4. Review the stage diagram below with the students . Draw the diagram on the whiteboard and have students come up and write in each part of the stage .



THEATRICAL

Before attending an ArtsBridge Field Trip, review the following questions and vocabulary with your students:

Author – the writer of a script; also called the book

Audition – to perform to get a role for the production; usually includes singing, dancing, and reading scenes from the show; usually takes place in front of the Director & Creative Team

Ballad – a slow song for actors to showcase vocal clarity

Blocking – the specific movement of actors on stage; usually given by the Director

Box Office – a booth inside the theater where tickets are sold

“Calling the Show” – the process of calling out the lighting, sound, and scene-change cues during a performance; usually done by the stage manager

Casting – the process through which actors are chosen for roles in the production

Casting Agent – one who chooses actors for roles in the production

Choreographer – one who designs dance sequences and teaches them to the cast of the production

Composer – one who writes the music **Conductor** – one who directs the orchestra

Costumes – a set of clothes in a style typical of a particular country or historical period

Curtain Call – the appearance of one or more performers on stage after a performance to acknowledge the audience’s applause

Director – one who supervises the creative aspects and guides the artistic vision of the production

Dress Rehearsal – rehearsal in which performers practice with costumes, props, lights, and microphones

Dresser – one who assists performers with their costumes during dress rehearsals and shows

Electrician – one who works with the lighting designer to adjust and operate lighting instruments

Ensemble / Chorus – typically singers, dancers, or actors who perform in group numbers

Head Carpenter – one who builds the sets for the production **House Left** – the left side of the theater, when facing the stage (audience’s point of view)

House Manager – one who oversees all aspects of the audiences; responsible for ushers and audience safety

House Right – the right side of the theater, when facing the stage (audiences point of view)

Lighting Designer – one who decides where the lighting instruments should go, how they should be colored and which ones should be on at any particular time to affect mood, visibility, and to showcase costumes and sets.

Lyricist – one who writes the words to a song

Makeup Artist – one who applies cosmetics to a performer’s face and body

Music Director – one who teaches and rehearses the music with the orchestra

Orchestra Pit – the lowered area in front of a stage where the orchestra (musicians) sit and play during the performance

Overture – an orchestral piece at the beginning of an opera, suite, play, oratorio, or other extended composition

Producer – a person responsible for the financial and managerial aspects of staging a play, opera, musical, ballet, etc.

Program – a listing of the order of events, names of the cast and crew, and other relevant information for the production

Property (Props) Manager – one who manages all items used on stage that cannot be classified as scenery, electrics, or wardrobe

Proscenium Arch – the arch opening between the stage and auditorium; the frame of the stage

Read-through – the cast reads through the script without movement or music; typically done at the first rehearsal

Set Designer – one who creates the scenery for the stage **Sitzprobe** – the first rehearsal with both the performers and the orchestra, with no staging or dancing

Sound Designer – one who plans and executes the layout of all sound playbook and equipment for the show

Sound Operator – one who handles the sound playbook and mixing equipment for the show; works with Sound Designer

Sound Board – a desk comprising a number of input channels where each sound source is provided with its own control channel through which sound signals are routed into two or more outputs; controls all microphones and music

Spotlights – a lamp projecting a narrow, intense beam of light directly onto a place or person, especially a performer on stage

Standby / Understudy – one who studies a role and is prepared to substitute a performer when needed

Stage Left – the left side of the stage, when facing the audience (performer’s point of view)

Stage Manager – one who is responsible for the quality of the show’s production, assists the director, and oversees the show at each performance

Stage Right – the right side of the stage, when facing the audiences (performer’s point of view)

Technical Rehearsal – rehearsal incorporating the technical elements of a show such as the scene and property shirts, lighting, sound, and special effects

Uptempo Song – a fast, upbeat song for actors to showcase dancing and acting ability

Usher – one who guides audience members to their seats

Wig Master / Mistress – one who obtains and customizes wigs for performers to wear

VOCABULARY

WHAT IS ARTRAGEOUS?



Over 2500
national and
international
performances!

The *Artrageous Show* is a journey through the decade – stopping to admire unique icons and famous music throughout the journey. You will see artists, live, in their make-shift studios creating portraits of these famous icons.

One of the things that make these portraits different than a portrait you would see in a museum is that they are done in an oversized way –

accompanied by live music. The

artist creating each portrait paints at

lightning speed and uses their hands and brushes to create what we call Action Painting. The portraits are done on a giant scale that is 4 feet by 6 feet and sometimes 6 feet by 6 feet.

Unlike most shows, *Artrageous* loves for you to get involved! We are a show about participation. You can take photos, you can sing along, you can dance in the aisles... do whatever moves you!



VOCABULARY WORDS

Landscape ~ The depiction in art of landscapes, natural scenery such as mountains, valleys, trees, rivers, and forests.

Portrait ~ A representation of a particular individual.

Still Life ~ A painting featuring an arrangement of inanimate, everyday objects.

Real Life ~ Figures and scenes are depicted as they are experienced or might be experienced in everyday life.

History Painting ~ Refers to any picture with a high-minded or heroic narrative (message) as illustrated by the exemplary deeds of its figures.

Horizon Line ~ In painting perspective, it's the level your eyes are at, an imaginary line to which things recede.

Vanishing Point ~ The point at which parallel lines receding from an observer seem to converge.

A uniquely entertaining show culminating in a gallery of fabulous finished paintings.



POST-SHOW ACTIVITIES

#1 Drawing Exercises

CREATE! There is never a wrong answer in Art!

- With a partner ~ Draw a portrait of the person sitting in front of you. Don't lift your pencil!
- Draw a self portrait from memory .
- Look at a portrait of a famous icon. Draw a picture of the person UPSIDE DOWN!
- Imagine the portrait to be just shapes. Draw the image as only shapes. Eyes are ovals, the nose is an inverted triangle, lips are a boat on the sea....





POST-SHOW ACTIVITIES

#2 Write a Letter

Goal: To reflect on the performance experience and to practice writing skills.

When: After the performance.

Explanation: After the show, students will write letters to *Artrageous* performers or to ArtsBridge donors whose support keeps field trip tickets accessibly priced for school groups.

Activity:

1. After attending the performance, discuss the experience with your students. Use the following discussing questions to guide the conversation:

- a. What was the show about?
- b. What parts of the show were most exciting?
- c. Which character did you enjoy the most? Why?
- d. What did the characters learn?

2. Next, invite students to write a letter to the performers or to ArtsBridge donors about their theater experience.

a. Letter Example #1

Dear *Artrageous* Performers,
My favorite part of the show was....
While watching your show I felt... because...
I have drawn a picture of the scene when....
If I could be in your show, I would play the part of ... because...

b. Letter Example #2

Dear ArtsBridge donors,
Thank you for helping my class go to the Cobb Energy Centre to see *Artrageous*! My favorite part of the show was.... While I was watching the show I felt... because... I have drawn a picture of the scene when...
This experience was special because...

3. After writing the letter, students can illustrate a scene from the performance.

4. Last, mail the letters to us and we'll make sure they get to the right people.

ArtsBridge Foundation
Attn: Education Department
2800 Cobb Galleria Parkway
Atlanta, GA 30339

Follow-Up Discussion Questions:

1. What did you choose to share in your letter? Why?
2. How does receiving a letter make you feel?
3. How do you think the recipient of your letter will feel when he or she receives your letter? Why?
4. Why do you think the performers choose to make being a performer their career?
5. Why do you think people give money to help students like you attend ArtsBridge performances at the Cobb Energy Performing Arts Centre?

POST-SHOW ACTIVITIES

#3 Write a Review

Goal: To write a review of the performance.

Explanation: In this activity, students will reflect on the performance by writing their own review.

Activity:

1. Ask students to imagine that they are a critic for the school newspaper. They are going to write a review of *Artrageous* to inform others about what they experienced.
2. In the review, they should describe with details:
 - a. What they saw
 - b. What they heard
 - c. How the performance made them feel
 - d. What the performance reminded them of
 - e. What their favorite part was and why
3. Remind students that they must paint a picture of the experience with their words so that others who did not see the performance can imagine it as vividly as possible.

Follow-Up Questions:

1. What did you include in your review? Why did you want to share that particular idea?
2. What things did writing the review make you think about that you hadn't thought of by just watching the show?



Curriculum Connections



Visual Arts



Fine Arts
(Music/Theatre/Dance)

Resources

<https://vimeo.com/147787508%E2%80%A8>

<http://artrageousexperience.com/%E2%80%A8>

https://en.wikipedia.org/wiki/The_Starry_Night%20

https://en.wikipedia.org/wiki/The_Weeping_Woman%20

https://en.wikipedia.org/wiki/The_Persistence_of_Memory%20

[https://en.wikipedia.org/wiki/Water_Lilies_\(Monet_series\)%20](https://en.wikipedia.org/wiki/Water_Lilies_(Monet_series)%20)

https://en.wikipedia.org/wiki/Marilyn_Diptych%20

https://en.wikipedia.org/wiki/American_Gothic%20

https://en.wikipedia.org/wiki/Self-Portrait_with_Thorn_Necklace_and_Hummingbird



creating the future through arts education

2800 Cobb Galleria Pkwy
Atlanta, GA 30339
Education@artsbridgega.org
770.916.2805

www.artsbridgega.org